

## Creekside Dress Code 2016-2017

All clothes must be appropriately sized for the student. Oversized, baggy, excessively tight, torn, tattered or distressed clothing or clothing that clings to the body, is transparent or sheer will not be permitted.

**BADGES MUST BE KEPT ON YOUR PERSON DURING SCHOOL HOURS AND MUST BE AVAILABLE UPON REQUEST.**

### SHIRTS/SWEATSHIRTS/JACKETS (LONG OR SHORT-SLEEVED)

- Students may wear **solid** colored golf shirts (turned down collar), any color or Creekside/Clear Springs t-shirts or hoodies or solid t-shirts (crew neck or v-neck).
- Shirts may or may not display a small logo measuring no more than a square inch.
- Un-tucked shirts should be no longer than 4 inches from the waist.
- Stomach may not be revealed when arms are raised.
- No low cut or revealing shirts that cling to the body are allowed.
- Shirts must be cotton/polyester knit without textures, patterns, designs, pouches, or Velcro.
- Any solid undershirt (long or short-sleeved) may be worn under school-appropriate shirt.
- 3-button Henley-style shirts are permitted (no more than 3 buttons).
- Sleeveless shirts are not permitted.

### ANY CREEKSID SPIRIT SHIRT

Students are allowed to wear any shirt from Art, Student Council, Cheerleading, Band, Choir, Orchestra, NJHS member shirts, Creekside Athletic teams, etc. T-shirts that support any academic or athletic programs at Clear Springs are permitted. No camouflage shirt of any kind may be worn. Dry-fit style shirts must not be form fitting.

### SWEATSHIRTS/SWEATERS

- Must be solid-colored and may not display a label, lettering or logo larger than your thumb.
- Sweatshirts must be crew/rounded neck, pull-over and must be banded at the wrist/waist.
- If sweatshirt is removed during school hours, a shirt described above must be worn underneath the sweatshirt.
- Solid-colored hoodies may be worn during school hours. At no time will the student be allowed to wear the hood of the jacket indoors at the school.

### OUTERWEAR (OTHER THAN HOODIES)

- May be worn to school but must be placed in the locker during school hours.

### SHOES AND SOCKS

- All shoes must include a back strap over the heel.
- Heels/soles may not be higher than 2 inches.
- Shoes may not have rollers/wheels.
- Socks must be **solid** and matching in color.
- No slippers, flip-flops, or house shoes are permitted.

### **DRESS CODE VIOLATIONS WILL RESULT IN DISCIPLINARY MEASURES.**

Please see Discipline Management System.

**School administration has final determination on whether a student's dress is acceptable.**

### PANTS/DRESSES/CAPRI'S/SHORTS/SKORTS/SKIRTS

Must be **solid** in color. If a logo is present on the pants, it must measure a square inch or less. The following colors in denim/Dockers/cargo are allowed (this includes blue denim jean/shorts):

**ANY SOLID COLOR PANT/DRESS/CAPRI'S/SHORTS/SKORTS/SKIRTS MAY BE WORN – Students may wear any color pants/shorts (including blue denim)**

Specifications for pants, dresses, Capri's, shorts, skorts, and skirts are as follows:

**(All pants must be in good repair with no tears, tattering or fraying).**

- No leather, leather-like pants, wind pants, athletic wear/sweatpants/dance or shiny/spandex fabric pants of any color. **Yoga pants and jeggings are not permitted. Leggings are only permitted with appropriate length skirts/dresses (not with any type of shirt).**
- Waist of pants must be within 1-inch of the measured waist. (No hip huggers).
- Corduroy pants/skirts/shorts are permissible.
- May not be baggy or sag away from the body.
- Crotch of pants must fit at the natural crotch of the student.
- Bottom of pants may not extend past the bottom of the shoe.
- Belts are not required. However, if necessary, a belt will need to be worn to keep pants at the natural waist. Belts may not have any inappropriate logos, pictures, slogans or spikes.
- Belt should not extend more than 6 inches from buckle.

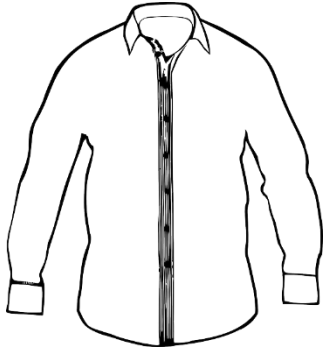
Dresses, shorts, skirts, jumpers, and skorts must meet all pants specifications.

- **Bottom of hem must be mid-thigh when student is seated.**
- Solid-colored Polo-style dresses within dress code may be worn.
- Skirts with a slit will be measured from the top of the slit.
- Solid-colored leggings are permitted with appropriate length skirts/dresses.

### ACCESSORIES AND RELATED ITEMS

- Piercings are limited to ears only. Ear gauges must be approved by administration.
- Bandanas and hats are not permitted. Any other headwear items deemed distracting by administration will be subject to removal by student.
- Accessories that are spiked or have inappropriate slogans, pictures, or logos are not permitted.
- Unnatural hair color or unusual hairstyles will not be permitted (including Mohawks).
- No black or dramatic-looking makeup will be permitted (other than for theatre productions).
- Oversized or excessive jewelry is not permitted (18" or longer chains/chokers, bracelets over 1" width, necklaces/chokers over 1/2" width, or earrings over 1" are not permitted).
- No writing/markings on the body/clothes of any kind will be allowed – including ink/marker, etc., on any visible body part.
- Notching/carving/designing of the eyebrows or hair will not be permitted.
- Small purses are allowed. Oversized purses may be required to be placed in locker.
- Backpacks must be kept in lockers at all times. Students will be allowed to carry either Creekside sling bags or a sling bag purchased outside of school.

**PLEASE NOTE:** Students may consider keeping a clean change of clothes in their locker for accidents that may occur. Creekside Intermediate will not supply students with a change of clothes.



Short or long-sleeved button down shirt – solid in color



Henley 3-button style shirt – solid in color



Hoodie must be SOLID in color – logo must be able to be covered by student's thumb



Polo shirt – solid in color



T-shirt (crew neck or v-neck) – solid in color

## 2016-2017 DRESS CODE VIOLATIONS

- 1<sup>st</sup> offense = Warning
- 2<sup>nd</sup> offense = 1 hour d-hall
- 3<sup>rd</sup> offense = 2 hour d-hall
- 4<sup>th</sup> offense = Administrative discretion